

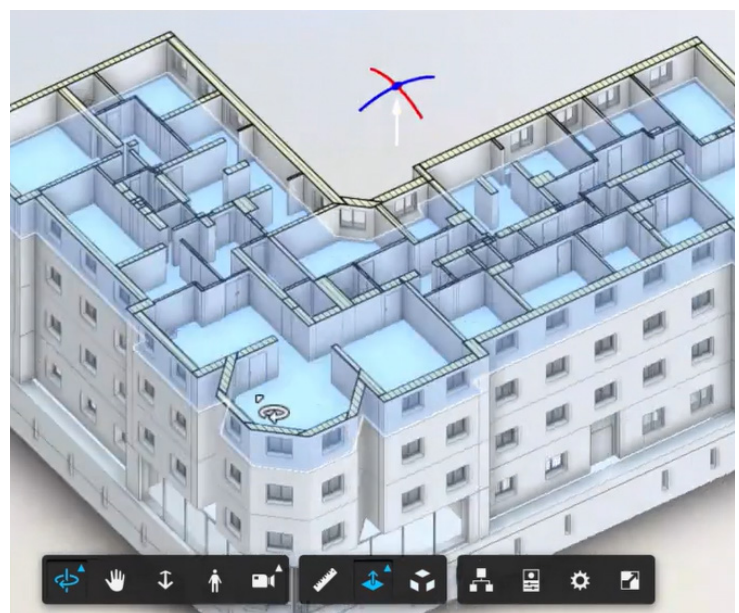


## SWG digitalisation services

**For organisations looking to digitalise their sites and reap the benefits of instantly accessible site data, SWG can help.**

Using our Plan to BIM and Scan to BIM methods, we can build a lifelike, accurate, digital 3D model of your buildings or sites, providing the ability to rely upon precise measurements, view the location and dimensions of access points or openings, or capture information tags such as acceptable temperature range, room usage / purpose or renter details.

Once your file is delivered to you, we are also able to assist with integrating your CAFM system and asset database to fully connect the model to show more in-depth detail such as asset history, warranties, reordering details for spare parts, manuals and in progress works.



## Benefits

- Rapid creation of 3D BIM models, whether you have paper drawings, CAD files, or no plans at all
- Revolutionary new AI-powered Plan to BIM service cuts standard modelling time by 90%
- Laser-focused Scan to BIM service replicates your site with high precision and eliminate unnecessary call outs
- Download and import your BIM model to SWG's QFM BIMi or third-party software, and integrate with QFM or third-party CAFM software, to use the BIM model in operational FM
- Access SWG's international BIM expertise to ensure best value modelling

## Plan to BIM

For those who have existing accurate paper drawings or CAD-based plans that reflect the current layout of the building or site, we recommend our Plan to BIM service.

Our revolutionary new AI engine is the fastest, most cost-effective way to build a digital model, using machine-learning to transform floor plans into a functional 3D simulation in days instead of weeks, and weeks instead of months depending on your building complexity.

Our BIM consultants will guide you through the process, discussing your goals and FM requirements to ensure the best value model for your needs.

The model will be built to meet your needs, with the level of detail you choose for each elements (i.e. doors, walls, floors) – and we can walk you through this process, recommending what would be best for your objectives. For example, Level 1 would show a window as an opening in the wall, whereas Level 5 would model it to represent the as built state including all components, hardware and connection details.

The BIM model will be delivered in the file format you require, such as Revit or ISF, which can be hosted within QFM BIMi or other third-party software used by your organisation or service provider.

## Scan to BIM

No plans? No problem. 3D laser scanning is an unsurpassed method of creating an accurate image of the building and obtaining exact measurements for a three-dimensional space.

Laser scans capture images, or point clouds, at high speed with such precision that almost perfect 3D images of internal and external areas can be produced. From the point clouds, models can be created with precision and simplicity.

We add all properties of the building elements, such as room furnishings or required cleaning standards, so they become searchable, scalable, readable and measurable. Using this information, the FM team is able to utilise the 3D model to inform maintenance operations and gain new levels of insight and efficiency.

### Try our new AI-powered BIM models

For a limited time, to start your project and help you understand how a 3D model can accelerate your FM services, we offer to digitalise one building of up to 1,000 square meters from a paper or digital drawing for a one-off cost of £450.

Get in touch: [info@swg.com](mailto:info@swg.com) or 020 8877 4080.

